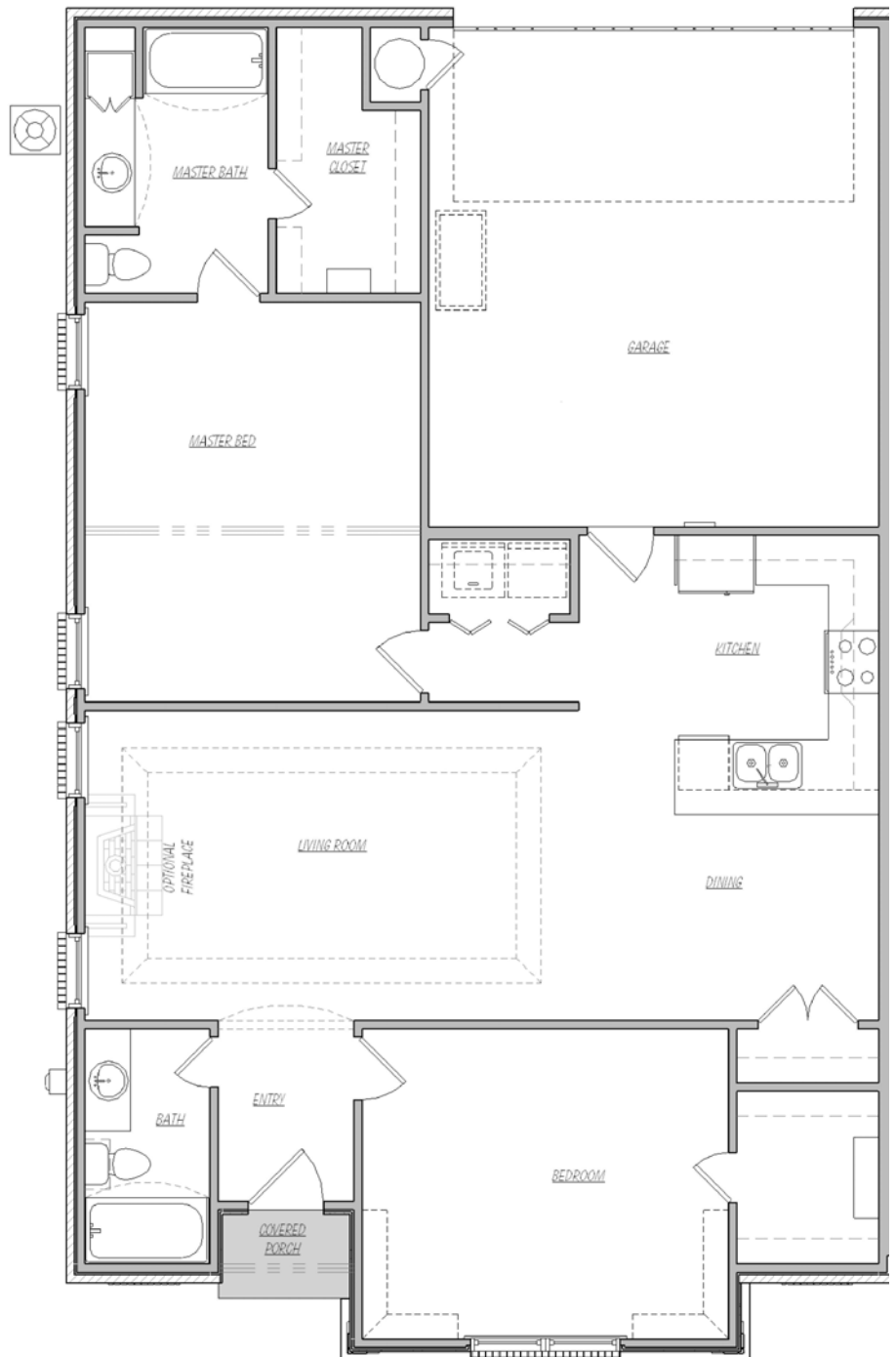


# STONE MEADOW

BY



The BRICE



All plans subject to final approval and may change, without notice to comply with lot restrictions. All changes are at the discretion of the builder i.e., Cobblestone Homes

Phone: 479.251.1111

Fax: 1.866.703.5343

Email: [yourhome@cobblestonehomes.info](mailto:yourhome@cobblestonehomes.info)

[www.cobblestonehomes.info](http://www.cobblestonehomes.info)

1307A Floor Plan Shown

CONTEMPORARY LIVING, OLD WORLD STYLE

# STONE MEADOW

BY



## Maintenance-Free Living

- Available in 1258, 1258\*, 1302\* and 1307 Heated Square Feet.

*\*indicates alternate elevation*

- 2 Bedroom & 2 bath
- 8' & 9' Ceilings
- French country exterior
- Maintenance free vinyl & metal trim
- Security Systems
- Architectural shingles
- One Year Builders Warranty
- Energy efficient cellulose insulation, double pane vinyl windows, 13 SEER AC
- Sprinkler System
- Maintenance FREE living,

- Bentonville Public Schools
- Cox Communications
- Arkansas Western Gas
- City of Bentonville Utilities
- Southwestern Bell Telephone

## Presents the **BRICE** At Stone Meadow

Visit [www.cobblestonehomes.info](http://www.cobblestonehomes.info) For details!



*Designers rendition only. Optional amenities shown. Ask for details.*

- Custom cabinets with granite counter-tops in kitchen
- Kitchen island with bar
- Large living area is open to kitchen and dining
- Tile floors in kitchen and dining
- Ceiling fans in all bedrooms & living room
- Master suite has large walk-in closet
- Many custom choices & upgrades available

See all available choices and upgrades on our website

Bentonville, Arkansas

From I-540 take SH102 West 4.25 miles to Greenhouse Road. Go South 0.5 mile on Greenhouse Rd to Glen Road. Go East 0.25 mile on Glen Road to Stone Meadow.

Amenities subject to change without notice.

Phone: 479.251.1111

Fax: 1.866.703.5343

Email:

[yourhome@cobblestonehomes.info](mailto:yourhome@cobblestonehomes.info)

[www.cobblestonehomes.info](http://www.cobblestonehomes.info)

CONTEMPORARY LIVING, OLD WORLD STYLE